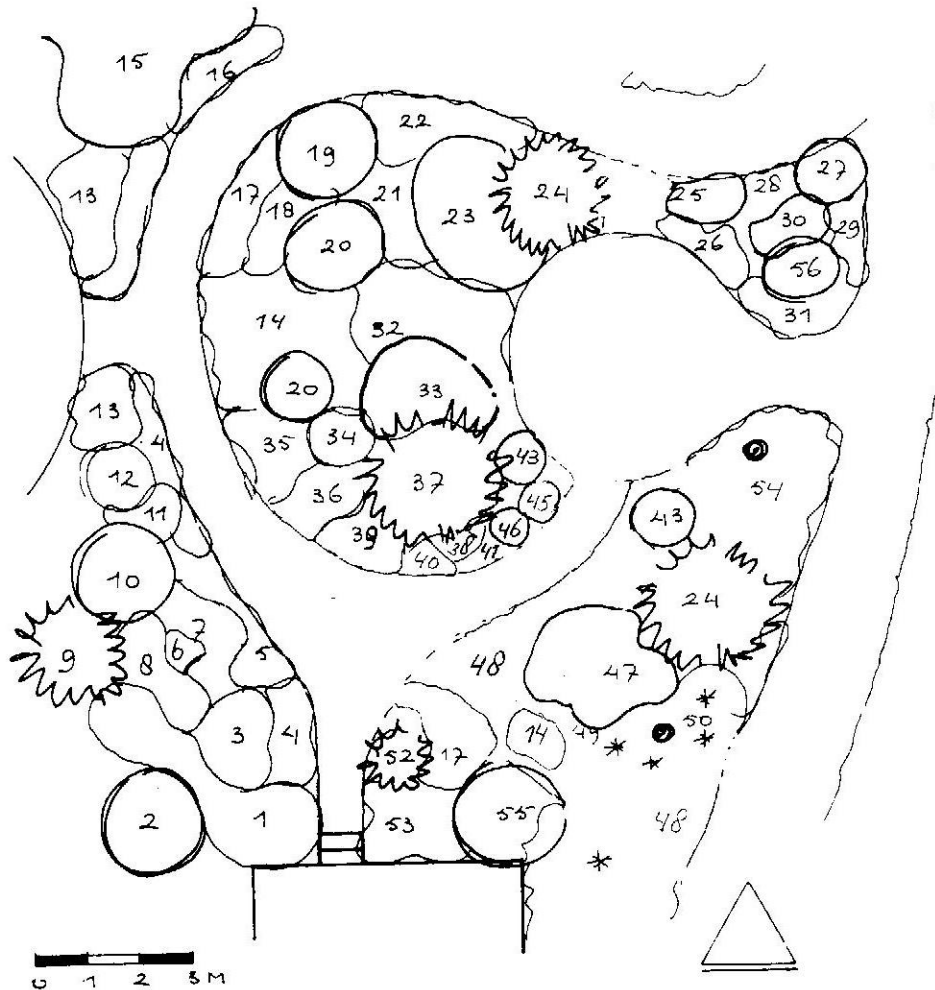


13 HERFSTBORDER

- | | |
|---|---------------------------------------|
| 1 <i>Hypericum Hidcote</i> | 11 <i>Verbena hastata</i> |
| 2 <i>Rosa hugonis</i> | 12 <i>Chrysanthemum uliginosum</i> |
| 3 <i>Cimicifuga simplex</i> | 13 <i>Heliopsis scabra</i> |
| 4 <i>Sedum kamtschaticum Variegatum</i> | 14 <i>Salvia officinalis</i> |
| 5 <i>Solidago Laurin</i> | 15 <i>Berberis ottawensis Superba</i> |
| 6 <i>Anemone Whirl Wind</i> | 16 <i>Geranium phaeum</i> |
| 7 <i>Aster Audrey</i> | 17 <i>Bergenia Sunningdale</i> |
| 8 <i>Aconitum arendsii</i> | 18 <i>Salvia Mainacht</i> |
| 9 <i>Chamaecyparis White Spot</i> | 19 <i>Viburnum plicatum</i> |
| 10 <i>Berberis rubrostilla</i> | 20 <i>Rosa Lavender Dream</i> |

- | | |
|---|---|
| 21 <i>Aster cordifolius Ideal</i> | 39 <i>Anaphalis triplinervis</i> |
| 22 <i>Euonymus Gracilis</i> | 40 <i>Sedum telephium Herbstfreude</i> |
| 23 <i>Rosa Sally Holmes</i> | 41 <i>Aster Marie Ballard</i> |
| 24 <i>Chamaecyparis Triumph van Boskoop</i> | 43 <i>Weigelia</i> |
| 25 <i>Myrica gale</i> | 45 <i>Exochorda racemosa</i> |
| 26 <i>Pachistima canbyi</i> | 46 <i>Rosa Moonlight</i> |
| 27 <i>Rosa wichuraiana yakachinensis</i> | 47 <i>Cotoneaster sterniana</i> |
| 28 <i>Witte judaspenning</i> | 48 <i>Acaena microphylla</i>
+ <i>Lychnis coronarius Alba</i>
+ <i>Yucca flaccida</i> |
| 29 <i>Geranium psilostemon</i> | 49 <i>Stachys olympicus</i> |
| 30 <i>Sorbaria aitchisonii</i> | 50 <i>Prunus</i> |
| 31 <i>Berberis buxifolia Nana</i> | 51 <i>Ceanothus Gloire de Versailles</i> |
| 32 <i>Lavandula Munstead Variety</i> | 52 <i>Pinus pumila</i> |
| 33 <i>Azalea geel</i> | 53 <i>Saxifraga umbrosa</i> |
| 34 <i>Aster Crimson Brocade</i> | 54 <i>Hosta Hyacinthina</i> |
| 35 <i>Nepeta Six Hills Giant</i> | 55 <i>Syringa Elinor</i> |
| 36 <i>Aster Prof. Ant. Kippenberg</i> | 56 <i>Chionanthus virginicus</i> |
| 37 <i>Cryptomeria japonica Elegans</i> | |
| 38 <i>Anemone Honorine Jobert</i> | |



Notities: