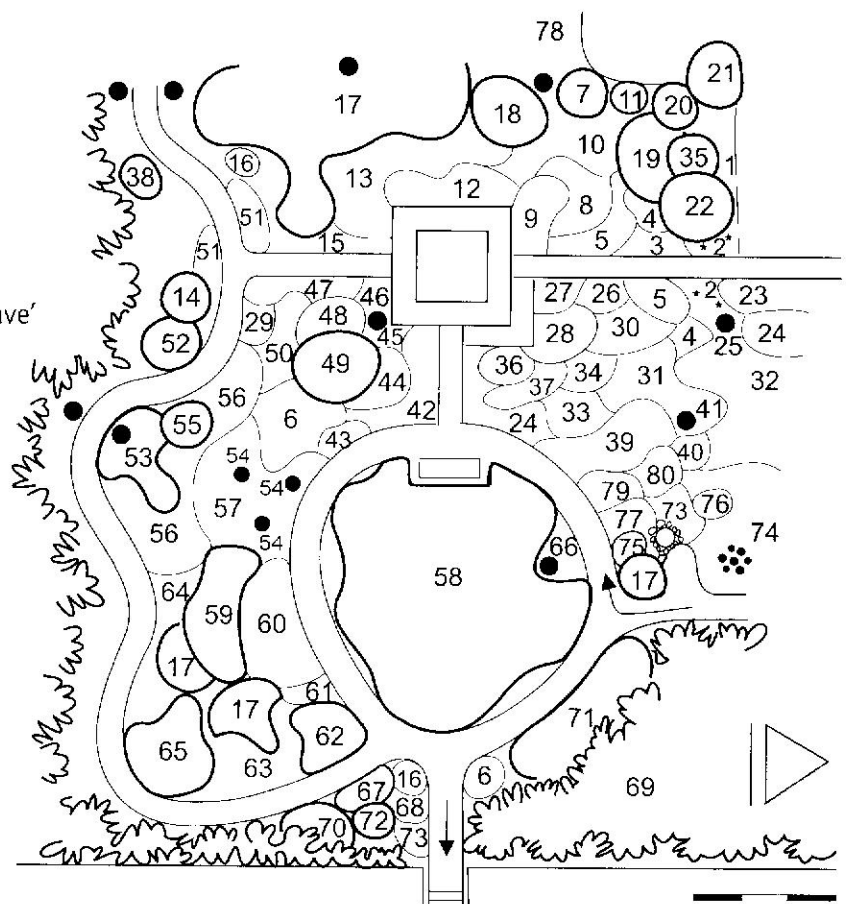


#### 4 VERWILDERINGSTUIN

- 1 *Hosta albomarginata*
- 2 *Osmunda regalis* 'Gracilis'
- 3 *Waldsteinia ternata*
- 4 *Thalictrum aquilegifolium*
- 5 *Carex morrowii* 'Variegata'
- 6 *Aruncus dioicus*
- 7 *Hydrangea macrophylla* 'White Wave'
- 8 *Astilbe* 'Erika'
- 9 *Lamium orvala* 'Album'
- 10 *Houttuynia cordata* 'Plena'
- 11 *Berberis*
- 12 *Geranium nodosum*
- 13 *Rodgersia podophylla*
- 14 *Pyrus floribunda*
- 15 *Vinca minor* + *Doronicum pardalianches*
- 16 *Persicaria weyrichii*
- 17 *Azalea*
- 18 *Hydrangea aspera*
- 19 *Rhododendron* wit
- 20 *Viburnum burkwoodii* 'Chenault'
- 21 *Clethra alnifolia* 'Rosea'
- 22 *Kalmia latifolia*
- 23 *Persicaria bistorta*
- 24 *Epimedium rubrum*
- 25 *Pyrus calleryana* 'Chanticleer'
- 26 *Brunnera macrophylla*
- 27 *Astilbe* 'Bremen'
- 28 *Hosta sieboldiana* 'Elegans'
- 29 *Stylophorum diphyllum*
- 30 *Chelone obliqua*
- 31 *Cimicifuga racemosa*
- 32 *Heracleum mantegazzianum*
- 33 *Campanula latifolia* 'Alba'
- 34 *Eupatorium purpureum* 'Album'
- 35 *Rhododendron* 'Persil'
- 36 *Smilacina racemosa*
- 37 *Geranium sylvaticum* 'Mayflower'
- 38 *Prunus laurocerasus*
- 39 *Petasites albus*
- 40 *Myrrhis odorata*
- 41 *Acer tataricum* subsp. *ginnala*
- 42 *Asperula taurina*
- 43 *Lunaria rediviva*
- 44 *Kirengeshoma palmata*
- 45 *Prunus padus* 'Colorata'
- 46 *Symphytum peregrinum*
- 47 *Tiarella wherryi*
- 48 *Astilboides tabularis*
- 49 *Rhododendron impeditum*
- 50 *Campanula latifolia* + *Smilacina racemosa*
- 51 *Euphorbia amygdaloides* var. *robbiae* + *Doronicum orientale* 'Finesse'



- 52 *Spiraea veitchii*
- 53 *Symphoricarpos albus*
- 54 *Ilex ciliospinosa*
- 55 *Cornus mas*
- 56 *Luzula sylvatica*
- 57 *Hedera helix* + *Dryopteris*
- 58 *Rhododendron*
- 59 *Hydrangea sargentiana*
- 60 *Onoclea sensibilis*
- 61 *Omphalodes verna*
- 62 *Mahonia wagneri* 'Pinnacle'
- 63 *Corydalis solida*
- 64 *Oxalis acetocella*
- 65 *Rhododendron*
- 66 *Cornus kousa*
- 67 *Sarcococca humilis*
- 68 *Uvularia grandiflora*
- 69 *Ilex aquifolium*
- 70 *Ribes alpinum*
- 71 *Stephanandra incisa* 'Crispa'
- 72 *Sorbaria tomentosa* var. *angustifolia*
- 73 *Osmunda regalis*
- 74 *Lamiastrum galeobdolon* 'Florentinum'
- 75 *Acer palmatum* 'Dissectum'
- 76 *Carex pendula*
- 77 *Trachystemon orientalis*
- 78 *Matteucia struthiopteris*
- 79 *Galium odoratum*
- 80 *Dryopteris filix-mas* 'Linearis'