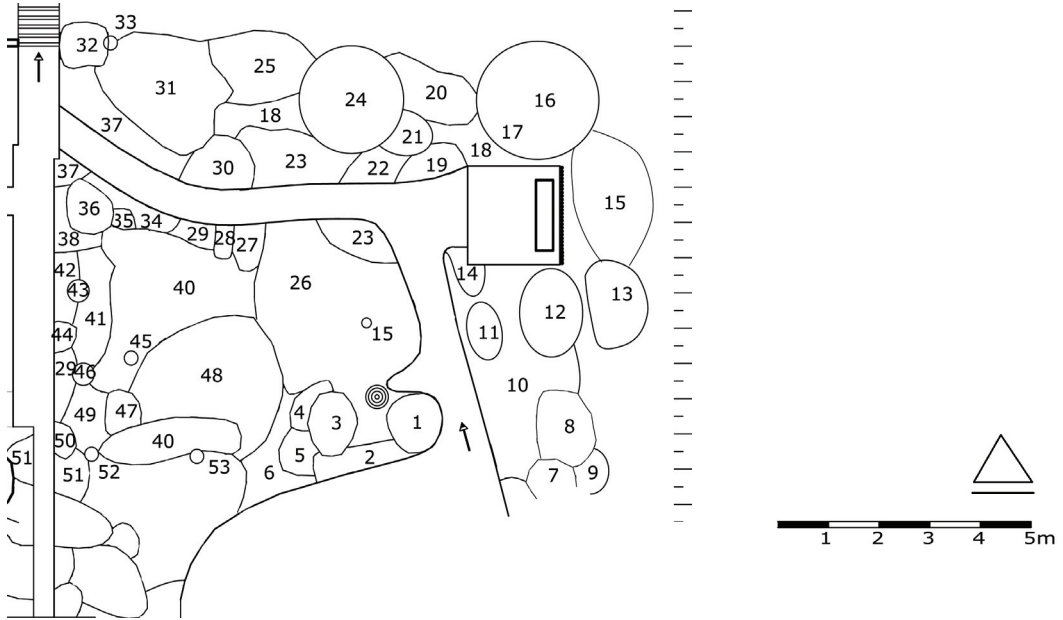


3. Bank bij waterbol



- | | |
|--|---|
| 1. Azalea + Anemone nemorosa | 27. Carex pendula |
| 2. Trachystemon orientalis | 28. Galium odoratum |
| 3. Acer palmatum 'Dissectum' | 29. Persicaria bistorta |
| 4. Osmunda regalis | 30. Hosta fortunei |
| 5. Myrrhis odorata | 31. Azalea |
| 6. Galium odoratum | 32. Hedera helix |
| 7. Ribes sanguineum | 33. Betula pendula 'Youngii' |
| 8. Kerria japonica | 34. Galium odoratum
+ Astilbe chinensis 'Pumila' |
| 9. Persicaria weyrichii | 35. Anemone tomentosa 'Albadura' |
| 10. Epimedium perralderianum + E. x rubrum
+ Anemone nemorosa | 36. Ilex crenata |
| 11. Gaultheria shallon | 37. Symphytum grandiflorum 'Wisley Blue' |
| 12. Euonymus europaeus 'Red Cascade' | 38. Bergenia 'Sunningdale' |
| 13. Taxus baccata | 40. Lunaria rediviva |
| 14. Convallaria majalis | 41. Geranium nodosum + Myosotis |
| 15. Corylus avellana | 42. Tiarella cordifolia |
| 16. Taxus cuspidate | 43. Thalictrum aquilegifolium |
| 17. Acer campestre | 44. Deschampsia cespitosa |
| 18. Symphytum grandiflorum | 45. Cotinus coggygria 'Rubrifolius' |
| 19. Athyrium filix-femina | 46. Aconitum carmichaelii 'Arendsii' |
| 20. Hydrangea macrophylla 'Lennarth's White' | 47. Persicaria polymorpha |
| 21. Ilex x meserveae | 48. Aruncus dioicus |
| 22. Omphalodes verna + Galium odoratum | 49. Epimedium rubrum |
| 23. Tellima grandiflora | 50. Brunnera macrophylla |
| 24. Amelanchier lamarckii | 51. Osmunda regalis 'Gracilis' |
| 25. Rhododendron | 52. Pyrus calleryana 'Chanticleer' |
| 26. Lamiastrum galeobdolon 'Florentinum' | 53. Acer tataricum subsp. ginnala |



waterbol