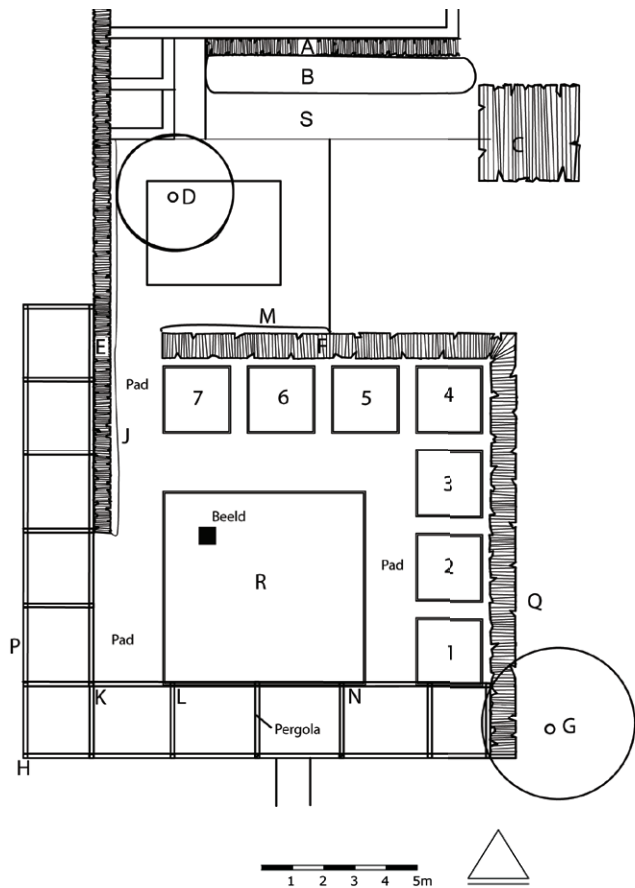


# 11. Aanwinstentuin

- A *Ligustrum vulgare* 'Atrovirens'
- B *Potentilla fruticosa* 'Abbotswood'
- C *Ilex meserveae* 'Blue Prince'
- D *Crataegus persimilis* 'Splendens'
- E *Thuja*
- F *Fagus sylvatica*
- G *Prunus maackii*
- H *Wisteria sinensis*
- J *Geranium cantabrigiense* 'Biokovo'
- K *Aristolochia durior*
- L *Rubus phoeniculasius*
- M *Geranium cantabrigiense* 'Karmina'
- P Geranium soorten voor de schaduw
- Q Bloemenweide met cultivars van *Geranium sylvaticum* en *Geranium maculatum*
- R *Deschampsia cespitosa* 'Goldschleier'
- S *Geranium* 'Anne Thomson'



## Vak 1 Normale tuingrond/zon

1. *Nepeta manchuriensis*
2. *Kalimeris mongolica* 'Anthonia'
3. *Sedum* 'José Aubergine'
4. *Miscanthus sinensis* 'Purple Fall'

## Vak 2 Vochthoudende grond/zon

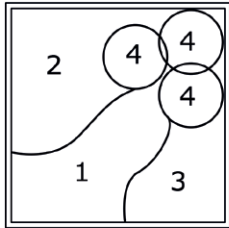
1. *Hemerocallis* 'Catharine Woodburry'
2. *Salvia nemorosa* 'Schwellenburg'
3. *Astrantia major* 'Blues Night'
4. *Iliamna remota*

## Vak 3 Voedselrijke grond/zon

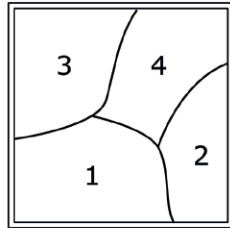
1. *Achillea* 'Moonshine'
2. *Rudbeckia laciniata*
3. *Angelica gigas*
4. *Sanguisorba* 'Cangshan Cranberry'

## Vak 4 Droge grond/zon/prairie

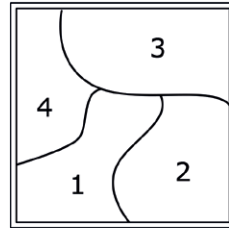
1. *Echinacea paradoxa* + *Stipa tenuifolia*
2. *Eryngium planum* 'Tiny Jackpot'
3. *Sanguisorba menziesii*
4. *Marrubium incanum*



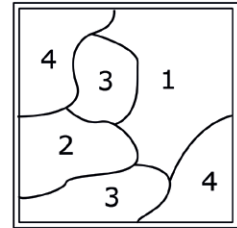
1



2



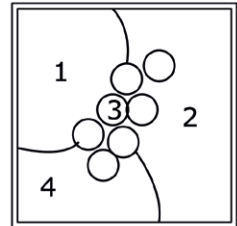
3



4

Vak 5  
Droge grond/zon

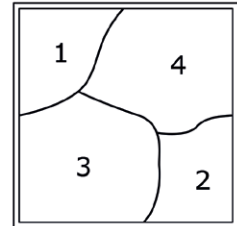
1. Achillea 'Terracotta'
2. Crocosmia masoniorum + Potentilla x hopwoodiana
3. Molinia caerulea 'Moorhexe'
4. Echinacea purpurea 'Tomato Soup'



5

Vak 6  
Vochthoudende grond/zon-halfschaduw

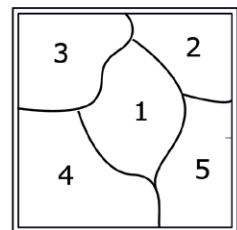
1. Thalictrum finetii
2. Lythrum virgatum 'Rose Queen'
3. Sanguisorba hakusanensis 'Lilac Squirrel'
4. Anemone 'Hadspen Abundance'



6

Vak 7  
Vochthoudende grond/halfschaduw

1. Aconitum napellus 'Kleiner Ritter'
2. Actaea racemosa
3. Geranium 'Sabani Blue'
4. Phlox paniculata 'Nachodka'
5. Clematis heracleifolia 'Cassandra'



7